

# Symphony Spring Break II: Cruisin' Along!

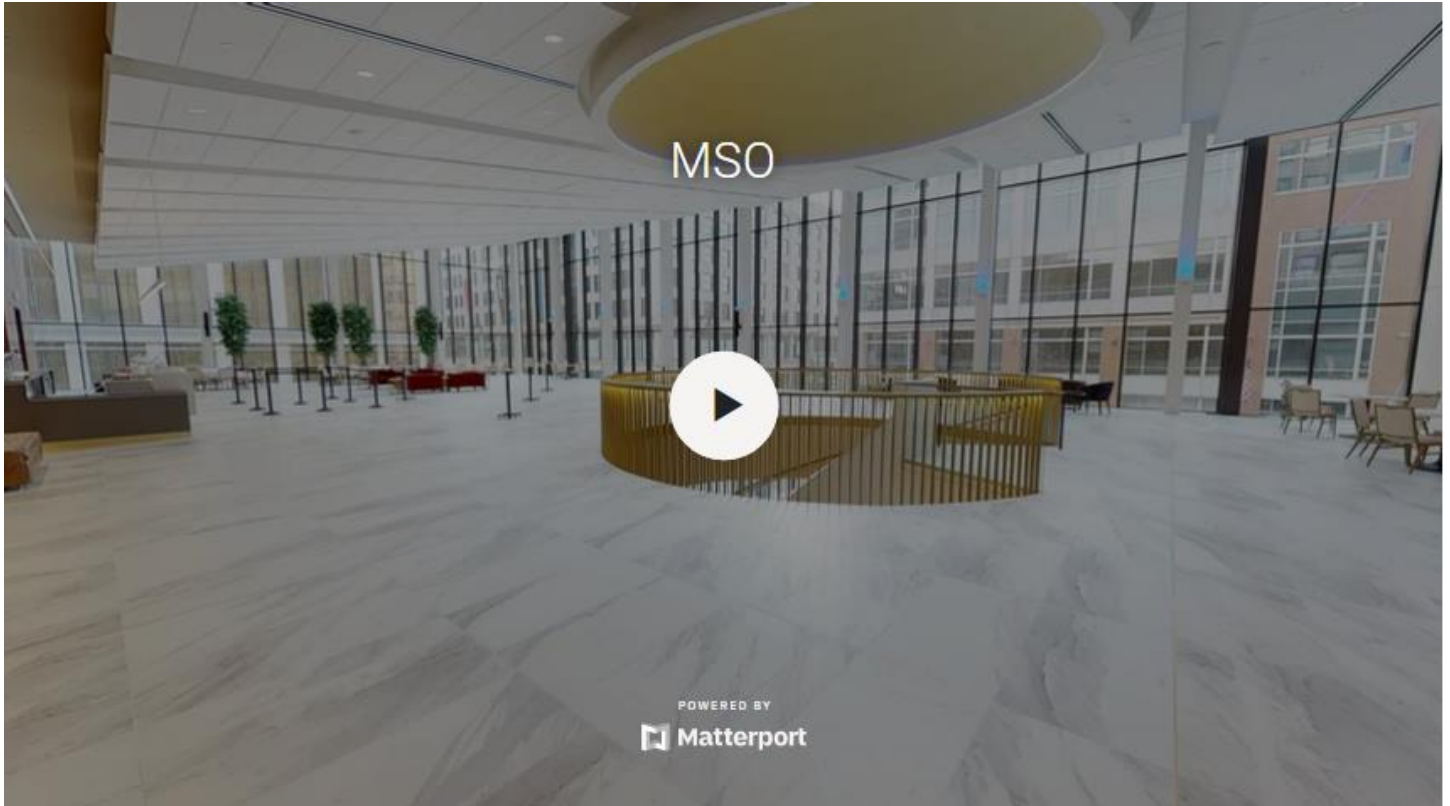
## Social Narrative



**Mso** MILWAUKEE  
SYMPHONY  
ORCHESTRA



## **Welcome to the Milwaukee Symphony Orchestra, Symphony Spring Break II: Cruisin' Along Concert!**



**At home, I can take a virtual tour of the Bradley Symphony Center. Click [here](#) to start.**





Steve Hall © Hall + Merrick Photographers

**Before the concert begins, I can explore the  
Bradley Symphony Center!**



**In the Gallery, I can take a selfie with my friends and family.**



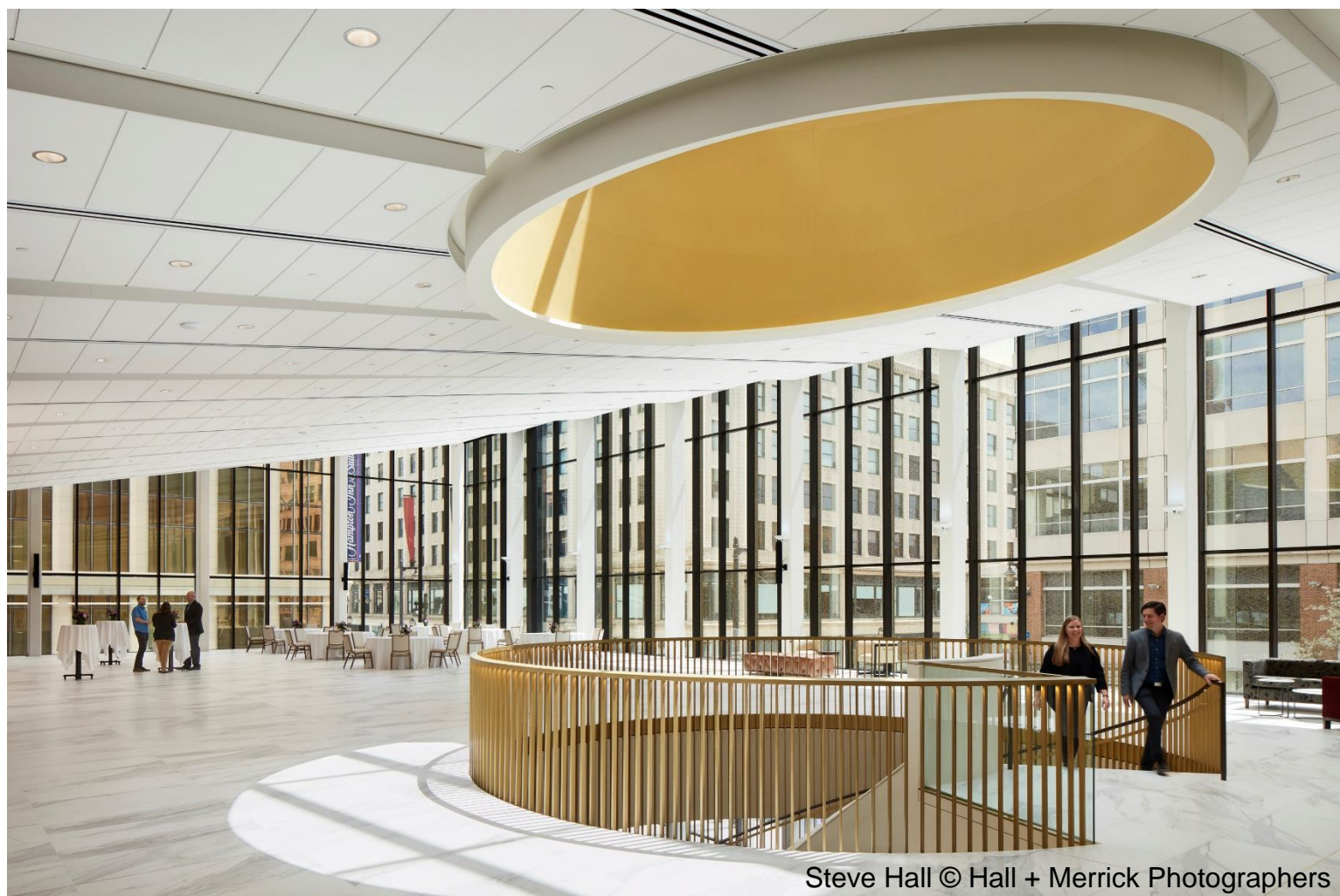


**In the Gallery, I can pick up my Travel Bag from an MSO Ambassador. My travel bag will have coloring sheets, a fidget toy, and a Concert Passport.**



Steve Hall © Hall + Merrick Photographers

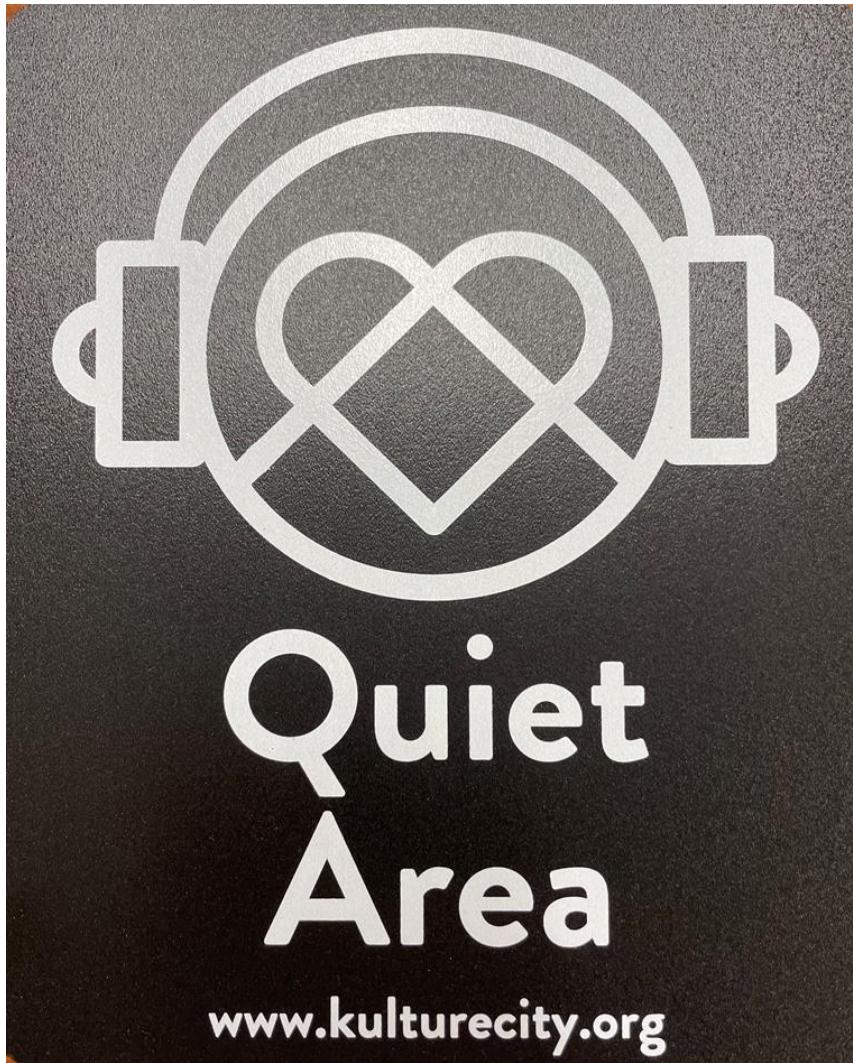
**In the Gallery, I can check out a Sensory bag (if I need one), or get some snacks and relax.**



Steve Hall © Hall + Merrick Photographers

**In the Atrium, I can meet musicians of the orchestra, color my coloring sheets, or take a movement break with MSO Ambassadors.**





**I can explore the Bradley Symphony Center to find the Quiet Areas, in case I need a break.**



**Before the concert begins, I will find my seat with my family in Allen-Bradley Hall!**

**I may see and hear musicians on stage practicing with their instruments before the concert. If the noise bothers me, I can wait in the lobby or a quiet area and come into the theater when the musicians are done practicing.**





**ASL Interpreters Jill & Derrick will be located in the aisle between Orchestra Center and Orchestra Right if I need sign language interpretation.**



**Today on the stage I will see three actors who will be our cruise directors for the performance. Their names are Adam, Ekene (EH-keh-nay), and Ash.**





**There are many instruments in an Orchestra. Let's learn about them!**

# STRING FAMILY



**VIOLIN**



**VIOLA**



**CELLO**



**DOUBLE BASS**

**BOW**

**I will learn about the instruments of the string family.**

**The string family includes the violin, viola, cello, and double bass. Musicians play these instruments by using their bows.**



# WOODWIND FAMILY



**FLUTE**



**OBOE**



**ENGLISH  
HORN**



**CLARINET**



**BASSOON**



**CONTRA  
BASSOON**

**I will learn about the instruments of the woodwind family.**

**The woodwind family includes the flute, oboe, English horn, clarinet, bassoon and contra-bassoon. Musicians play these instruments by blowing into the reed, or over the hole for flute players.**

# **BRASS FAMILY**



**TRUMPET**



**TROMBONE**



**FRENCH HORN**



**TUBA**

**I will learn about the instruments of the brass family.**

**The brass family includes the trumpet, trombone, French horn, and tuba. Musicians play these instruments by blowing into the mouthpiece.**



# PERCUSSION FAMILY



**I will learn about the instruments of the percussion family.**

**The percussion family includes the snare drum and big bass drum, the timpani, xylophone, marimba, cymbals, and many other instruments. Musicians play percussion instruments by striking, shaking, or scraping them.**



**Conductor Ben Firer will be our maestro for today's performance.**





**The sounds the orchestra makes will sometimes be loud.**

**Even though the sounds can be loud and can feel scary, none of the noises can hurt me.**



**If I need to take a break, I can leave and come back at any time.**





**Conductor Ben and the orchestra will perform a medley from *Pirates of the Caribbean* by Klaus Badelt.**

**(KLOWS BAH-delt)**



**Click [here](#) to listen to the piece on Spotify.**



**I can pretend to be a pirate and move to the music.**





**Conductor Ben and the orchestra will perform  
Movement III. Moonlight from *Four Sea Interludes*  
by Benjamin Britten.**



**Click [here](#) to listen to the piece on Spotify.**

# **LISTENING EARS**



**I can close my eyes and listen to the music.**





**Conductor Ben and the orchestra will perform Mvt. 3 Allegro from *Water Music*, Suite No. 1 in F major by George Frideric Handel.**

**(jorj FRI-drick HAHN-dell)**



**Click [here](#) to listen to the piece on Spotify.**



**I can pretend to be a royal person floating down the River Thames on a fancy boat.**





**Conductor Ben and the orchestra will perform  
“Can-Can” from *Orpheus in the Underworld* by  
Jacques Offenbach.**

**(jahk OFF-en-bahk)**



**Click [here](#) to listen to the piece on Spotify.**





**I can get up and move to the music.**



Conductor Ben and the orchestra will perform *On the Beautiful Blue Danube* by Johann Strauss, Jr..

(YO-hahn STROWS)



Click [here](#) to listen to the piece on Spotify.



**I can get up and move (or waltz) to the music.**





**Conductor Ben and the orchestra will perform  
“How Far I’ll Go” from *Moana* by Lin-Manuel  
Miranda.**

**(lin man-WELL mur-AN-duh)**



**Click [here](#) to listen to the piece on Spotify.**



**I can sing along with the music.**





Conductor Ben and the orchestra will perform *Beer Barrel Polka* by Lew Brown.



Click [here](#) to listen to the piece on Spotify.

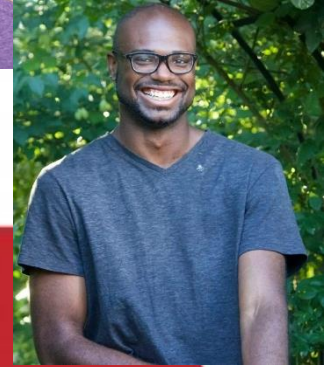




**I can sing and dance to the music.**



**When the performance is over, I can use the ASL sign for applause to thank the conductor, the musicians, and the actors.**



**Then it will be time to go home. When I get home I can share what I heard and saw at the symphony with my friends, family, and teachers.**





**The Milwaukee Symphony Orchestra musicians and staff are so happy you came to the performance today. They look forward to seeing you again!**