

Musical Influencers

May 31st 2:30 PM



Social Narrative



Steve Hall © Hall + Merrick Photographers

Welcome to the Milwaukee Symphony Orchestra
Musical Influencers concert!



At home, I can take a virtual tour of the Bradley Symphony Center. Click [here](#) to start.



Before the concert begins, I can explore the Bradley
Symphony Center!



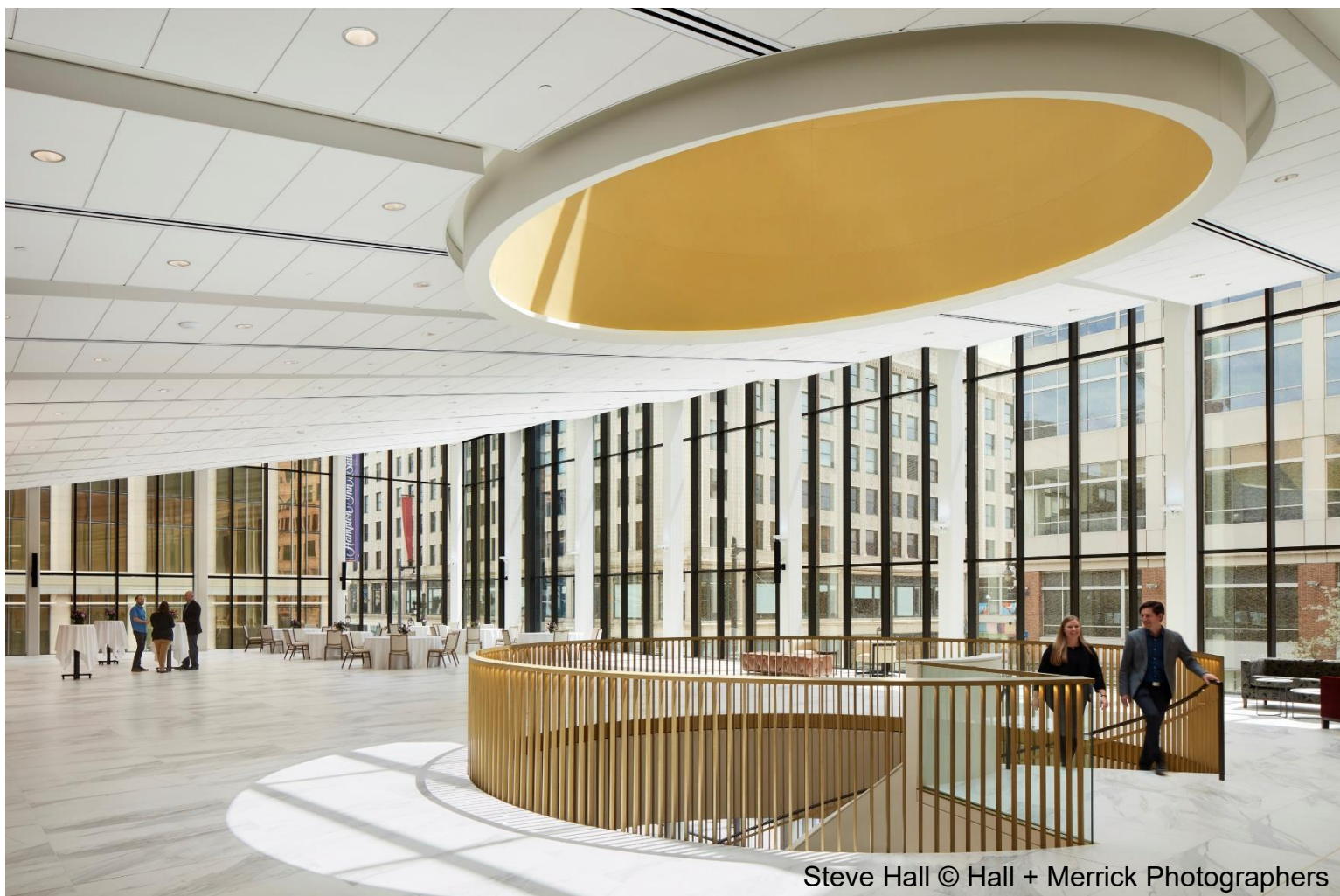
In the Gallery, I can take a selfie with my friends and family.



In the Gallery, I can pick up my Welcome Bag from an MSO Ambassador. My bag will have coloring sheets, a fidget toy, and a Subscribe List.



In the Gallery, I can check out a Sensory bag (if I need one), meet some MSO Musicians, learn about different local organizations, or get some snacks and relax.



Steve Hall © Hall + Merrick Photographers

In the Atrium, I can meet musicians of the orchestra, color my coloring sheets, learn about different local organizations, or take a movement break with MSO Ambassadors.



I can meet Chi-Chi, a therapy dog, in the Atrium if I want to. Chi-Chi will be in one place with his handler Jan, so if I don't want to meet him, I don't have to.

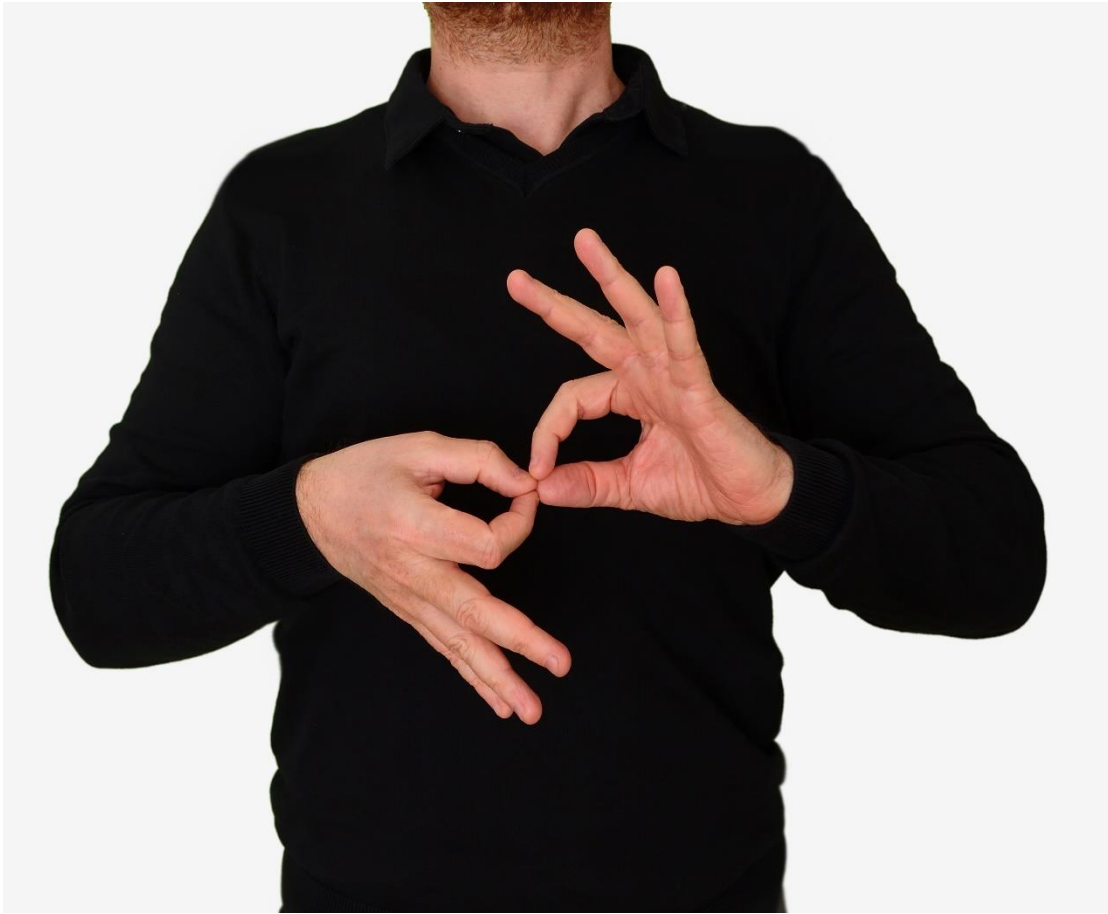


I can explore the Bradley Symphony Center to find the Quiet Areas, in case I need a break.



Before the concert begins, I will find my seat with my family in Allen-Bradley Hall!

I may see and hear musicians on stage practicing with their instruments before the concert. If the noise bothers me, I can wait in the lobby or a quiet area and come into the theater when the musicians are done practicing.



ASL Interpreters will be located in the aisle between Orchestra Center and Orchestra Right if I need sign language interpretation.



Conductor Ryan Tani will be our maestro for today's performance.



Today on the stage I will see three actors.
Their names are Ash, Jude, and Matt.



There are many instruments in an Orchestra. Let's learn about them!

STRING FAMILY



VIOLIN



VIOLA



CELLO



DOUBLE BASS

BOW



The string family includes the violin, viola, cello, and double bass. Musicians play these instruments by using their bows.

WOODWIND FAMILY



FLUTE



OBOE



**ENGLISH
HORN**



CLARINET



BASSOON



**CONTRA
BASSOON**

The woodwind family includes the flute, oboe, English horn, clarinet, bassoon and contra-bassoon. Musicians play these instruments by blowing into the reed, or over the hole for flute players.

BRASS FAMILY



TRUMPET



TROMBONE



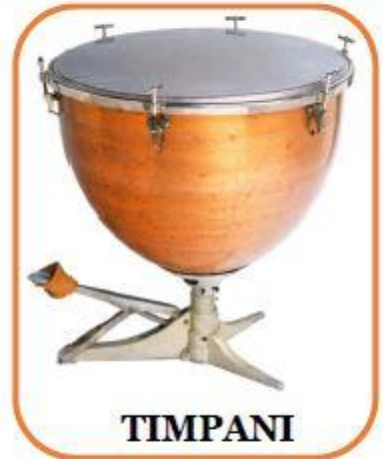
FRENCH HORN



TUBA

The brass family includes the trumpet, trombone, French horn, and tuba. Musicians play these instruments by blowing into the mouthpiece.

PERCUSSION FAMILY



The percussion family includes the snare drum and big bass drum, the timpani, xylophone, marimba, cymbals, and many other instruments. Musicians play percussion instruments by striking, shaking, or scraping them.



The sounds the orchestra makes will sometimes be loud.

Even though the sounds can be loud and can feel scary, **none of the noises can hurt me.**



If I need to take a break, I can leave and come back at any time.



Conductor Ryan and the orchestra will perform Movement I. from the Symphony No.5, by Ludwig Van Beethoven.

(Lood-vig vahn Bay-toe-venn)



Click [here](#) to listen to the piece on Spotify.



Conductor Ryan and the orchestra will perform The Shark Theme from *Jaws* by John Williams



Click [here](#) to listen to the piece on Spotify.



Conductor Ryan and the orchestra will perform the Overture to *The Magic Flute* by Wolfgang Amadeus Mozart.

(Voulf-gang Ahm-ah-day-oos Moat-zahrt)



Click [here](#) to listen to the piece on Spotify.



Conductor Ryan and the orchestra will perform the Overture to *West Side Story* by Leonard Bernstein.



Click [here](#) to listen to the piece on Spotify.



Conductor Ryan and the orchestra will perform Variations on a Shaker Melody from *Appalachian Spring* by Aaron Copland.



Click [here](#) to listen to the piece on Spotify.



Conductor Ryan and the orchestra will perform Ring Shout from Four Black American Dances by Carlos Simon.



Click [here](#) to listen to the piece on YouTube



Conductor Ryan and the orchestra will perform Highlights from *Wicked* by Stephen Schwartz.



Click [here](#) to listen to the piece on YouTube.



dance



I want to sing . . .

I can sing and dance to the music.



When the performance is over, I can use the ASL sign for applause to thank the conductor, the musicians, and the actors.



Then it will be time to go home. When I get home, I can share what I heard and saw at the symphony with my friends, family, and teachers.



The Milwaukee Symphony Orchestra musicians and staff are so happy you came to the performance today. They look forward to seeing you again!